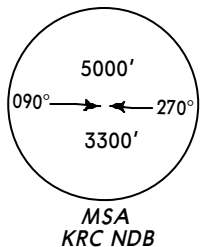


Apt Elev  
66'

Trans level: By ATC Trans alt: 4000'



KARPATOS ONE ALFA (KRC 1A)  
KARPATOS ONE BRAVO (KRC 1B)  
RWYS 30, 12 DEPARTURES



RODOS  
D 115.8 RDS  
N36 20.4 E028 04.9



LINRO  
N35 57.9 E027 42.0

KARPATOS  
314 KRC  
N35 25.2 E027 09.0

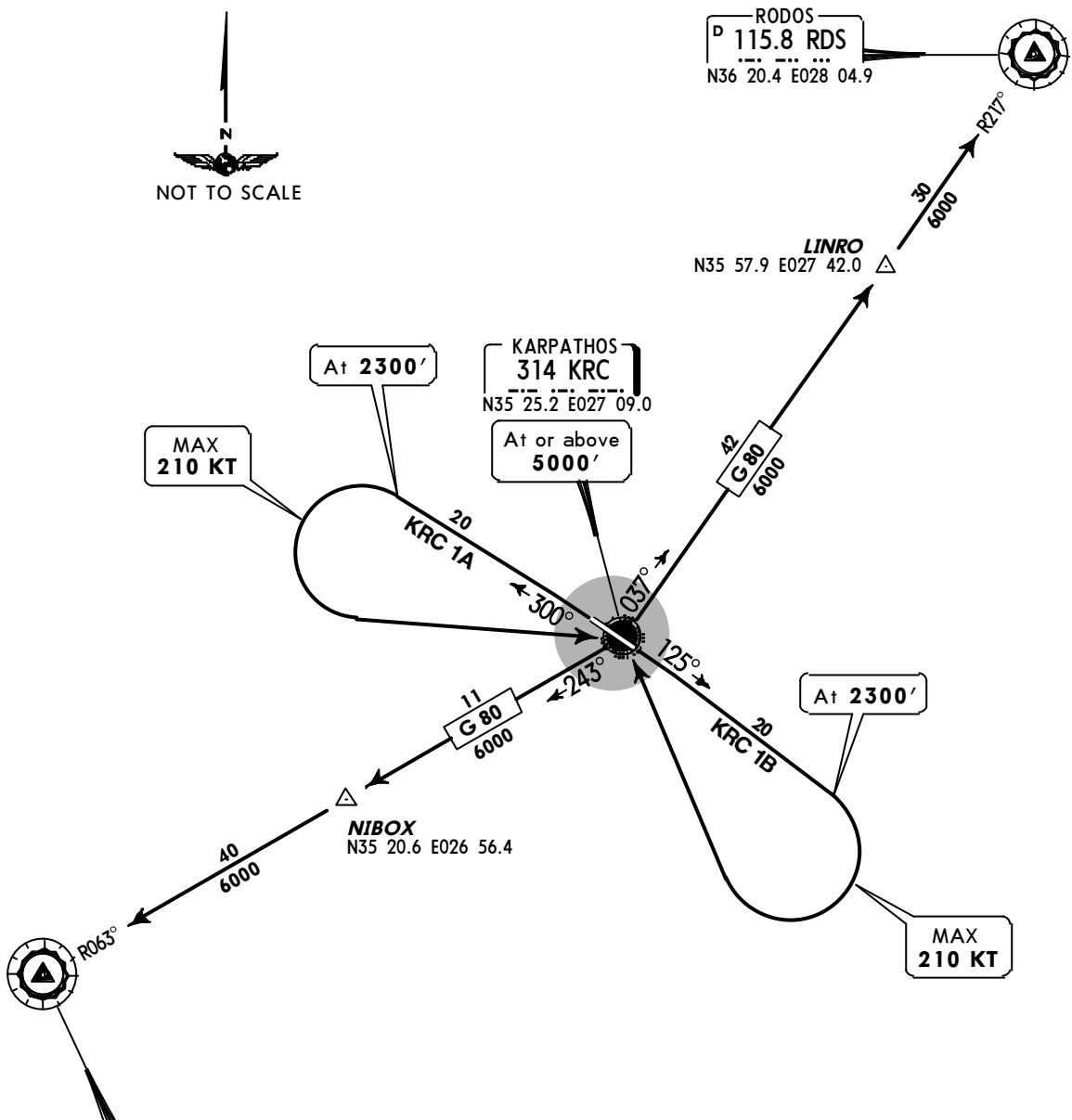
MAX  
210 KT

At 2300'

At or above  
5000'

At 2300'

MAX  
210 KT



These SIDs require a minimum climb gradient of 310' per NM (5.1%) until MEA is reached. Climb to 2300' before accelerating.

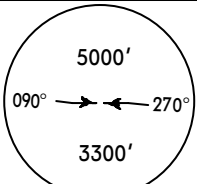
Gnd speed-KT	75	100	150	200	250	300
310' per NM	387	516	775	1033	1291	1549

SID	RWY	ROUTING
KRC 1A	30	Climb on 300° bearing from KRC to 2300', turn LEFT to KRC, then to destination via ATS routes.
KRC 1B	12	Climb on 125° bearing from KRC to 2300', turn RIGHT to KRC, then to destination via ATS routes.

\*KARPATHOS Information

122.1 123.2

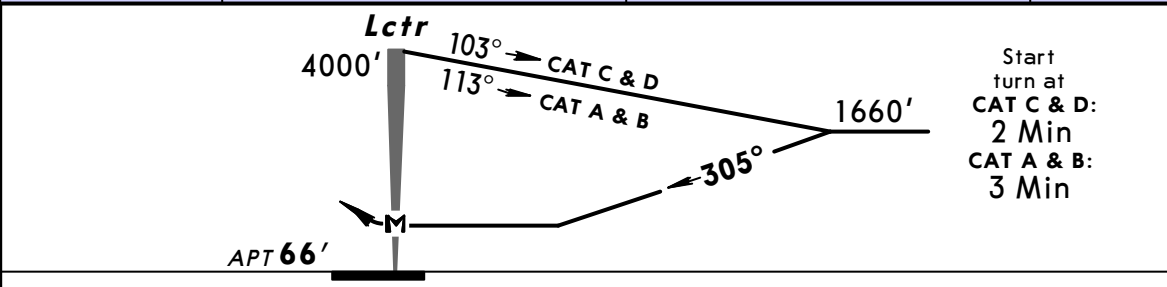
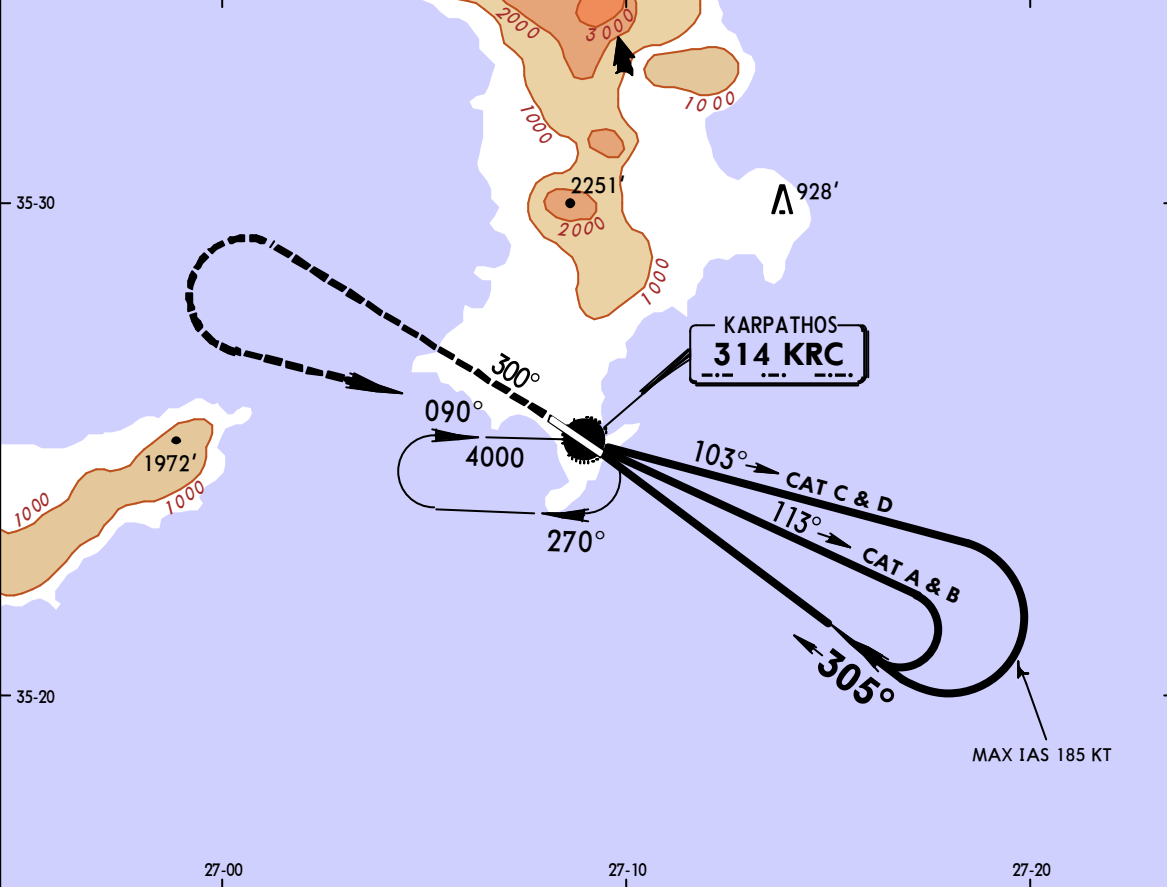
<i>Lctr</i> KRC <b>314</b>	<i>Final Apch Crs</i> <b>305°</b>	<i>Minimum Alt</i> No FAF	<i>MDA(H)</i> <b>700'</b> (634')	<i>Apt Elev</i> <b>66'</b>
----------------------------------	--------------------------------------	------------------------------	-------------------------------------	----------------------------



**MISSED APCH:** Climb on 300° to 2200', then turn LEFT (MAX IAS 185 KT) and proceed to Lctr to 4000' and hold.  
Climb to 2200' prior to level acceleration.

Alt Set: MB    Apt Elev: 2 MB    Trans level: By ATC    Trans alt: 4000'

MSA KRC Lctr



Start turn at  
CAT C & D:  
2 Min  
CAT A & B:  
3 Min

MAP at Lctr						REIL PAPI-L	2200'	on	300°
-------------	--	--	--	--	--	-------------	-------	----	------

**JAR-OPS**    STRAIGHT-IN LANDING RWY 30

CIRCLE-TO-LAND

MDA(H) **700'** (634')

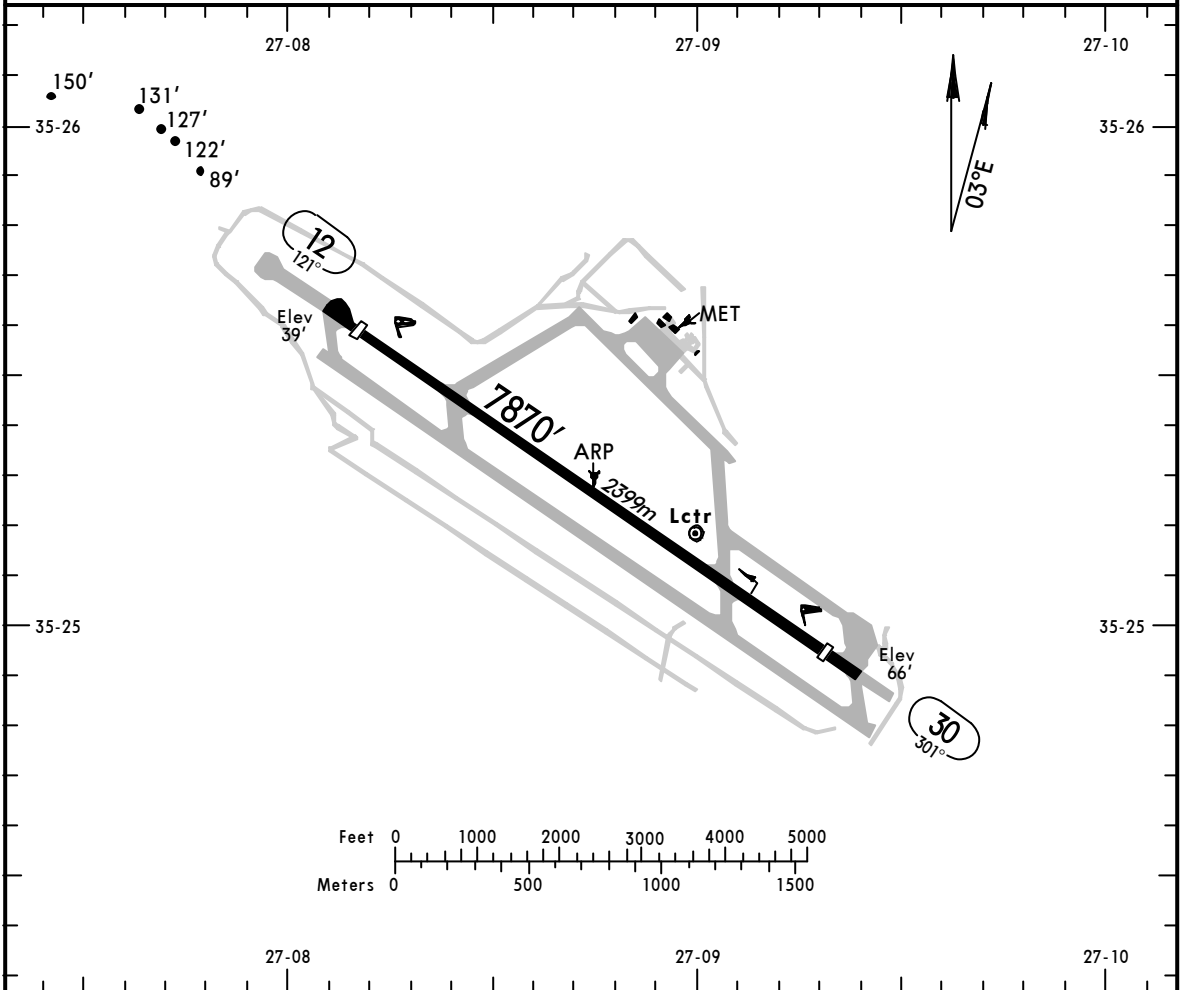
A	RVR 1500m	Max Kts. 100	MDA(H) <b>750'</b> (684')	VIS <b>1500m</b>
B		135	<b>750'</b> (684')	<b>1600m</b>
C	RVR 2000m	180	<b>900'</b> (834')	<b>2400m</b>
D		205	<b>900'</b> (834')	<b>3600m</b>

Prohibited Northeast of airport

Max Kts.	MDA(H)	VIS
100	<b>750'</b> (684')	<b>1500m</b>
135	<b>750'</b> (684')	<b>1600m</b>
180	<b>900'</b> (834')	<b>2400m</b>
205	<b>900'</b> (834')	<b>3600m</b>

\*KARPATHOS Information

122.1 123.2



ADDITIONAL RUNWAY INFORMATION

RWY				USABLE LENGTHS		TAKE-OFF	WIDTH
	HIRL	REIL	PAPI-L (angle)	Threshold	Glide Slope		
12	HIRL	REIL	PAPI-L (angle 2.8°)	7378' 2249m			98'
30	HIRL	REIL	PAPI-L (angle 3.0°)				30m

JAR-OPS

TAKE-OFF I

All Rwys		
LVP must be in Force		
RCLM (DAY only) or RL	RCLM (DAY only) or RL	NIL (DAY only)
A	250m	400m
B		
C	300m	500m
D		

1 Operators applying U.S. Ops Specs: CL required below 300m.